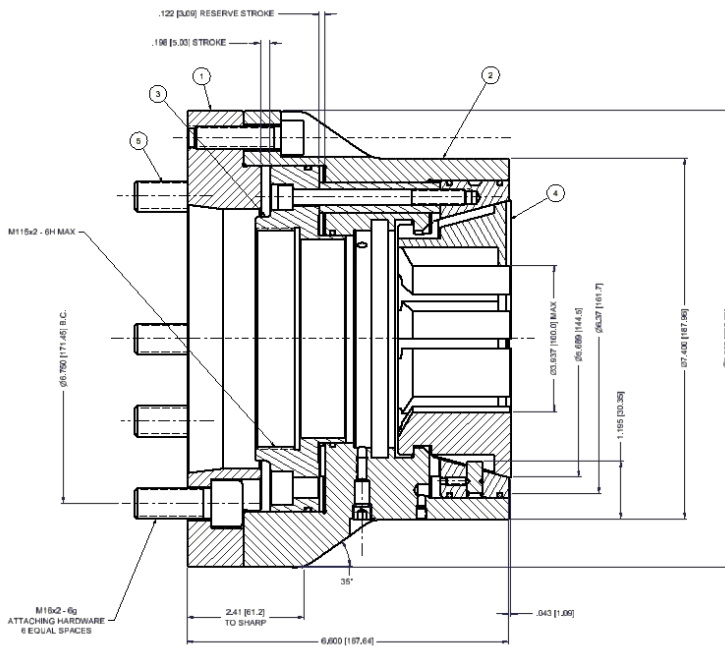


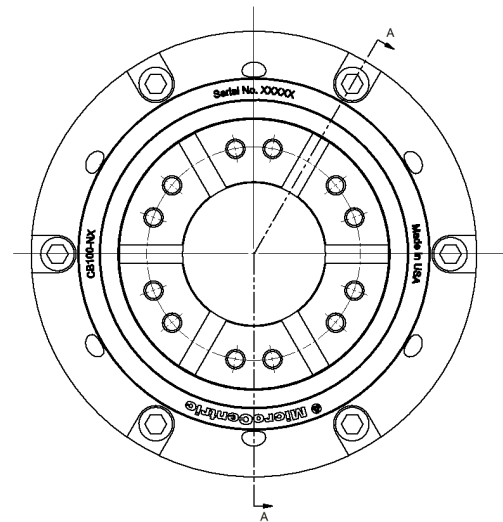
Specifications

Chuck Model	Spindle Nose	Collet Model	Accuracy Max Radial Runout	Collet Capacity	Collet Clamp Range	Chuck Stroke Lin- ear	Max Draw Tube Force	Max Clamping Force	Max Speed	Chuck Weight
CB100-NX/A8	A2-8	100BZI	.0008" 0.020mm	3.937" 100mm	+/- .040" 1mm	.315" 8mm	14,612 lbs 65 kN	33,721 lbs 150 kN	5,000 rpm	69.2 lbs 31.5 kg

Dimensions



SECTION A-A
SCALE 1 : 1



ITEM	QTY	PART NUMBER	DESCRIPTION
1	1	16 100 156	ADAPTER
2	1	16 100 219	FITTED BODY AND SLEEVE
3	1	SEE NOTE	DRAW TUBE CONNECTOR
4	1	20 810 0000	COLLET
3	6	83 196 M040	M16 x 40 SHCS

NOTES

- THE CHUCK IS SHOWN IN THE NOMINAL CLAMPED POSITION.
- THREAD PER CUSTOMER REQUIREMENTS.